

Siena Lake Metropolitan District

SIENA LAKE PUD THIRD AMENDMENT AS RECORDED UNDER RECEPTION NUMBER 2021016537, EXCEPT PUBLIC: R2-3E.

SAID PARCEL OF LAND CONTAINING 154.519 ACRES, MORE OR LESS, BEING MORE PARTICULARLY DESCRIBED AS FOLLOWS:
BEGINNING AT THE NORTH WEST CORNER OF SAID SIENA LAKE PUD THIRD AMENDMENT; THENCE CONTINUING EASTERLY, SOUTHERLY AND WESTERLY THE FOLLOWING FIFTEEN (15) COURSES:

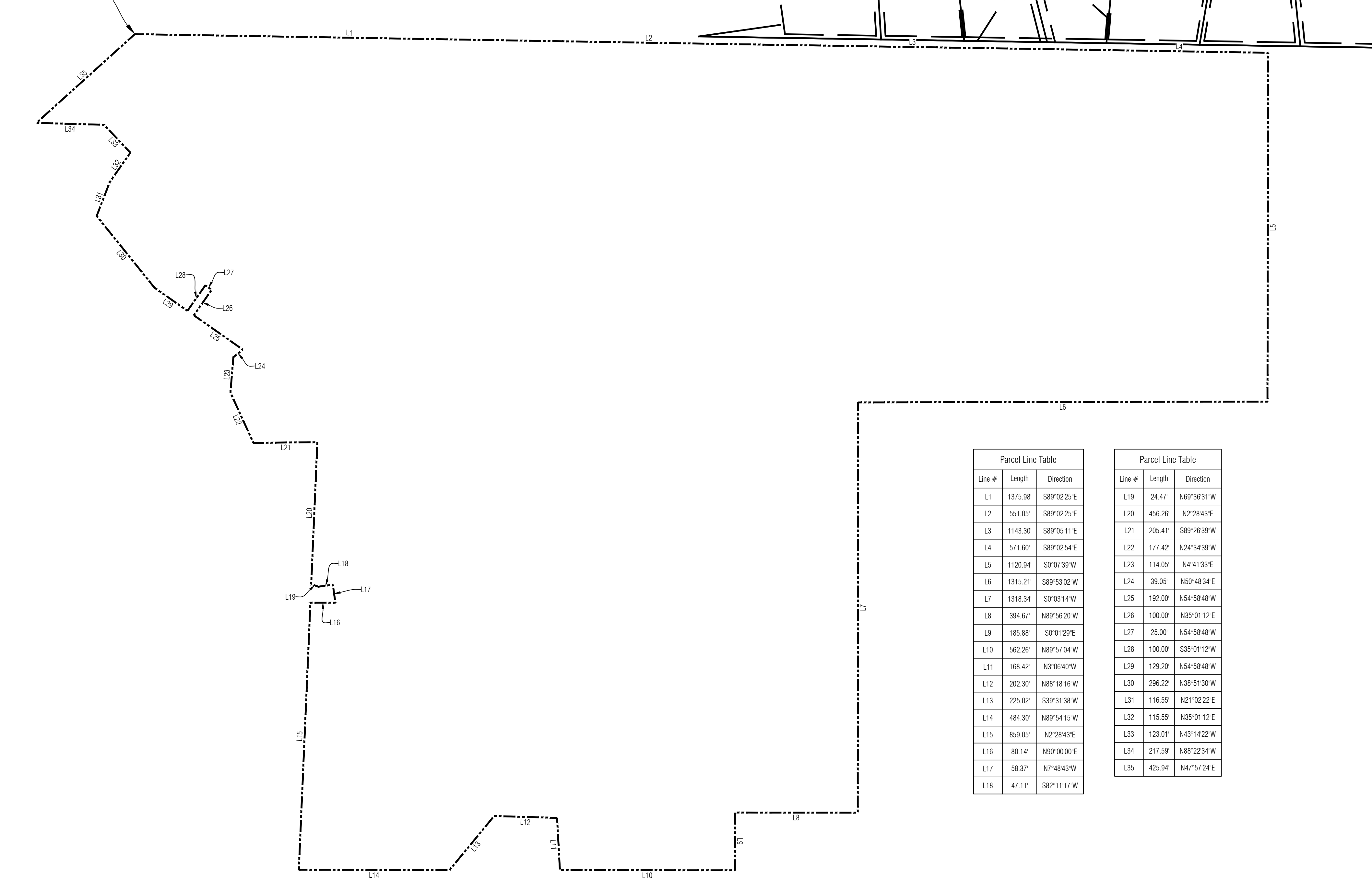
- 1) S89°02'25"E, A DISTANCE OF 1375.98 FEET
- 2) S89°02'25"E, A DISTANCE OF 551.05 FEET
- 3) S89°05'11"E, A DISTANCE OF 1143.30 FEET
- 4) S89°02'54"E, A DISTANCE OF 571.60 FEET
- 5) S0°07'39"W, A DISTANCE OF 1120.94 FEET
- 6) S89°53'02"W, A DISTANCE OF 1315.21 FEET
- 7) 0°03'14"W, A DISTANCE OF 1318.34 FEET
- 8) N89°56'20"W, A DISTANCE OF 394.67 FEET
- 9) S0°01'29"E, A DISTANCE OF 185.88 FEET
- 10) N89°57'04"W, A DISTANCE OF 562.20 FEET
- 11) N03°06'40"W, A DISTANCE OF 168.42 FEET
- 12) N88°18'16"W, A DISTANCE OF 202.30 FEET
- 13) S39°31'38"W, A DISTANCE OF 225.02 FEET
- 14) N89°54'15"W, A DISTANCE OF 484.30 FEET
- 15) N02°28'43"E, A DISTANCE OF 859.05 FEET TO A POINT ON THE SOUTHERLY LINE OF PUBLIC: R2-3E OF SAID R.N. 202116537;

THENCE NORTHERLY, WESTERLY AND EASTERLY ALONG THE EASTERLY LINE OF SAID PUBLIC: R2-3E THE FOLLOWING TWENTY ONE (21) COURSES:

- 1) N90°00'00"E, A DISTANCE OF 80.14 FEET;
- 2) N07°48'43"W, A DISTANCE OF 58.37 FEET
- 3) S82°11'17"W, A DISTANCE OF 47.11 FEET
- 4) N69°36'31"W, A DISTANCE OF 24.47 FEET
- 5) N02°28'43"E, A DISTANCE OF 456.26 FEET
- 6) S89°26'39"W, A DISTANCE OF 205.41 FEET
- 7) N24°34'39"W, A DISTANCE OF 177.42 FEET
- 8) N04°41'33"E, A DISTANCE OF 114.05 FEET
- 9) N50°48'34"E, A DISTANCE OF 39.05 FEET
- 10) N54°58'48"W, A DISTANCE OF 192.00 FEET
- 11) N35°01'12"E, A DISTANCE OF 100.00 FEET
- 12) N54°58'48"W, A DISTANCE OF 25.00 FEET
- 13) S35°01'12"W, A DISTANCE OF 100.00 FEET
- 14) N54°58'48"W, A DISTANCE OF 129.20 FEET
- 15) N38°51'30"W, A DISTANCE OF 296.22 FEET
- 16) N21°02'22"E, A DISTANCE OF 116.55 FEET
- 17) N35°01'12"E, A DISTANCE OF 115.55 FEET
- 18) N43°14'22"W, A DISTANCE OF 123.01 FEET
- 19) N88°22'34"W, A DISTANCE OF 217.59 FEET
- 20) N47°57'24"E, A DISTANCE OF 425.94 FEET TO THE POINT OF BEGINNING.

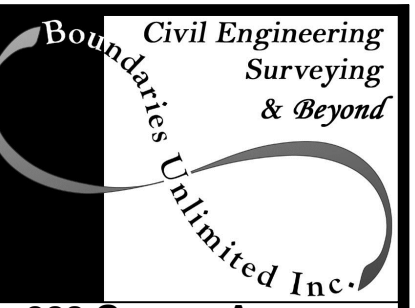
SAID PARCEL OF LAND CONTAINING 154.519 ACRES, MORE OR LESS.

POINT OF BEGINNING



Line #	Length	Direction
L1	1375.98	S89°02'25"E
L2	551.05	S89°02'25"E
L3	1143.30	S89°05'11"E
L4	571.60	S89°02'54"E
L5	1120.94	S0°07'39"W
L6	1315.21	S89°53'02"W
L7	1318.34	S0°03'14"W
L8	394.67	N89°56'20"W
L9	185.88	S0°01'29"E
L10	562.20	N89°57'04"W
L11	168.42	N03°06'40"W
L12	202.30	N88°18'16"W
L13	225.02	S39°31'38"W
L14	484.30	N89°54'15"W
L15	859.05	N02°28'43"E
L16	80.14	N90°00'00"E
L17	58.37	N07°48'43"W
L18	47.11	S82°11'17"W

Line #	Length	Direction
L19	24.47	N69°36'31"W
L20	456.26	N02°28'43"E
L21	205.41	S89°26'39"W
L22	177.42	N24°34'39"W
L23	114.05	N04°41'33"E
L24	39.05	N50°48'34"E
L25	192.00	N54°58'48"W
L26	100.00	N35°01'12"E
L27	25.00	N54°58'48"W
L28	100.00	S35°01'12"W
L29	129.20	N54°58'48"W
L30	296.22	N38°51'30"W
L31	116.55	N21°02'22"E
L32	115.55	N35°01'12"E
L33	123.01	N43°14'22"W
L34	217.59	N88°22'34"W
L35	425.94	N47°57'24"E

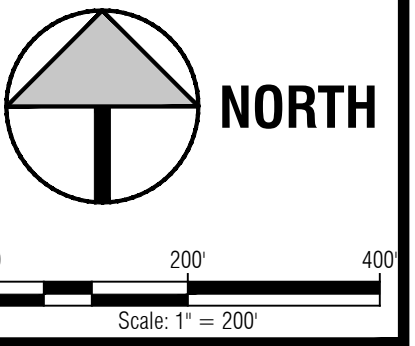


923 Cooper Avenue
Suite 201
Glenwood Springs, CO 81601
tele: 970.945.5252
fax: 970.384.2833

Engineer or Surveyor
Seal



Client Information:
SIENA LAKE METROPOLITAN DISTRICT
28 2ND ST STE 213
EDWARDS, CO 81632
970.926.6060



SIENA LAKE METROPOLITAN DISTRICT, F/K/A SADDLE RIDGE METROPOLITAN DISTRICT
 METROPOLITAN DISTRICT BOUNDARY

No.	Date	Revision	By
1			
2			
3			
4			
5			
6			
7			
8			
9			

PROJECT NO. 20040
FILE NAME: siena boundary.dwg
Designed by: BDL
Checked by: APF
Date: 1/20/22

Sheet
C.1